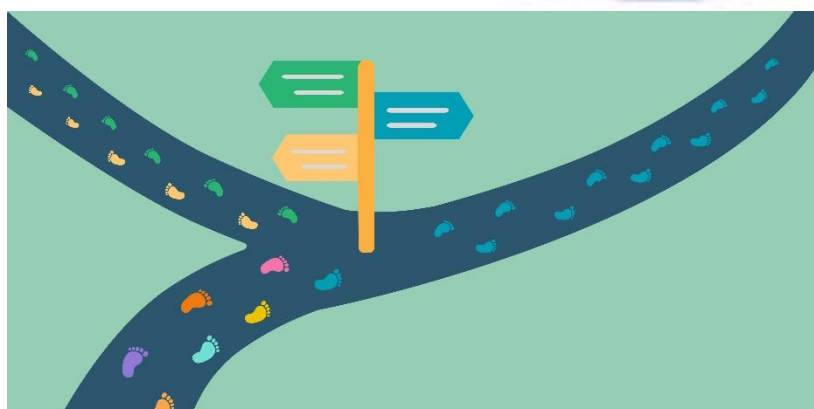




Transition Information and Directory for Post School Options



Preparing for Adulthood



Dear Parents/ Carers,

We recognise that transition can be a daunting and difficult time. 2020 has thrown us all some additional challenges, however, I would like to reassure you that we are still in a position to help you and your young person take those next steps.

The benefits of planning early:

- *Each young person experiences smooth and timely support to prepare for adulthood so that they are supported to meet their outcomes appropriately;*
- *Each young person is involved in the process, contributes their views and wishes, and has as much choice as possible about the future outcomes they hope to achieve and how they will be supported in this;*
- *The parents or carers of each young person are involved in the process as partners, and have clear and early information about how the transition process works and what the options may be for the young person;*
- *Adult services receive sufficient advance notice of young people whose needs they will be responsible for meeting, so that financial and other planning can be undertaken in time.*

This booklet provides you with some information to help you make an informed decision about those next steps, along with contact details. The information provided has been organised alphabetically and does not reflect any personal preference or endorsement. It is not an exhaustive list. Things are fast-changing and therefore this information will need to be regularly updated to keep up with the changes in the local offer. **Please do look at the local offer for the most up to date information: www.nottshelpyourself.org.uk.**

Below are some helpful hints, ***please do not panic*** if you have not taken these steps yet, but start them as soon as you are able.



Year 7, 8 and 9:

- Start to consider what adulthood may look like for your young person, talk to your young person about their hopes, dreams and desires and consider what support they may need.
- Access the transition fair at Carlton Digby and/ or the Nottinghamshire Preparing for Adulthood event.

Year 10 and 11:

- Ensure your young person's hopes and dreams are discussed during the annual review and start to ask questions about services that may support your young person. Consider your young person's education, friendships, access to the community, health needs and independent living needs.
- Consider applying for a Transition Social Worker or a support worker from the Enablement Team (0300 500 80 80). *Social workers have an important role to play in making transitions work better: they are well-placed to help young people and their families navigate these systems and aspire to achieve a good quality adult life.*

Year 12

- Begin to make enquiries and initial visits to preferred post school colleges/ placements.

Year 13 - Autumn Term

- Meet with the school transition coordinator (Tricia Marron) to discuss the transition plan. This will often take place within the annual review.
- If you have not already done so, start the application process for colleges/ services.
- If your young person is accessing services **other than college**, discuss funding with the transition social worker team (0300 500 80 80).
- Start to enquire about applying for adult health care providers, e.g. applying for a GP and community dentist, if these are currently accessed within school.



Spring/ Summer term

- Regularly stay in contact with school/ transition social worker/ adult health teams to:
 - Ensure the agreed transition plan is on track
 - Liaise with relevant professionals to ensure a smooth transition and any handovers can take place.
 - Arrange taster days and visits.

As always, I am also here to answer any questions or direct you to someone that can help. Please don't hesitate to contact me if you have any questions on transitions@carltondigby.notts.sch.uk

Best wishes,

Tricia Marron

Preparation for Adulthood and Transitions



Colleges

Day College Provision	Contact Details
<ul style="list-style-type: none"> • APTCOO <p>The group involves learning about healthy lifestyles, personal budgets, planning for the future, independent living skills and further education leading towards supported employment.</p>	<ul style="list-style-type: none"> • Variety of sites throughout Nottingham. <p>Tel: 01623 629 902</p> <p>https://www.nottshelpyourself.org.uk/kb5/nottinghamshire/directory/service.page?id=l2qfG4g69fM</p>
<ul style="list-style-type: none"> • Landmark Specialist College <p>Functional, practical, realistic learning courses from Entry Level 1 to Level 2.</p>	<ul style="list-style-type: none"> • A variety of sites within Nottingham and wider. <p>Tel: 01246 433 788</p> <p>www.landmarks.ac.uk</p>
<ul style="list-style-type: none"> • Brooksby Melton College <p>Level 1 hands-on vocational courses</p>	<ul style="list-style-type: none"> • Asfordby Road, Melton Mowbray LE13 OHJ <p>Tel: 01664 850 850</p> <p>www.brooksbymelton.ac.uk</p>
<ul style="list-style-type: none"> • Nottingham College • Stapleford Site • Basford • Clarendon <p>Range of course for SEN / mainstream</p>	<ul style="list-style-type: none"> • Main site for LLDD- Stapleford. Many sites throughout Nottingham. <p>Tel: 0115 9100 100</p> <p>https://www.nottinghamcollege.ac.uk/about-us/locations/stapleford</p>
<ul style="list-style-type: none"> • Grantham College <p>Independent living and skills for work at Entry level 1 to Entry Level 3.</p>	<ul style="list-style-type: none"> • Stonebridge Road, Grantham NG31 9AP <p>Tel: 01476 400 200</p> <p>www.grantham.ac.uk</p>



Some Level 1 vocational course available.	
<ul style="list-style-type: none">Homefield College Small Independent Specialist College, ASD. Day, Residential and respite provider.	<ul style="list-style-type: none">42 St Mary's Road, Sileby, Loughborough, Leicestershire, LE12 7TL Tel: 01509 814827 www.homefieldcollege.ac.uk
<ul style="list-style-type: none">Portland College. Educational and vocational training courses for a wide range of needs, including ASD.	<ul style="list-style-type: none">Nottingham Road, Mansfield, NG18 4TJ Tel: 01623 499111 www.portland.ac.uk
<ul style="list-style-type: none">RNIB College, Loughborough Small college offering a Moving Towards Independence course for a wide range of needs.	<ul style="list-style-type: none">Radmoor Road, Loughborough LE11 3BS Tel: 01509 611 077 www.rnibcollege.ac.uk



Day Services

Day Service Provision	Contact Details
<ul style="list-style-type: none"> The Adventure Services <p>A variety of activities often taking place in the outdoors.</p>	<p>Mansfield Woodhouse Day Service Manager: Mala Ramsamooj 07715263780</p> <p>Top Valley Day Service Manager: Sarah Francis 07544084883</p>
<ul style="list-style-type: none"> Autism East Midlands - Hamilton Lodge Autism East Midlands – Mundy Street. <p>Specialist Autism charity who advocate & provide high-quality services, Information and support for ASD.</p>	<ul style="list-style-type: none"> 10 Hamilton Lodge, Sherwood Rise, NG5 1AU.Tel: 0115 924 5887 Mundy Street, Heanor, Derbyshire, DE75 7DT Tel: 01773 765 949 <p>www.autismeastmidlands.org.uk</p>
<ul style="list-style-type: none"> Barncroft Centre <p>Nottinghamshire County Council run day service provision for adults with SEN.</p>	<ul style="list-style-type: none"> Sunnyside Road, Beeston , Nottingham, NG9 4FR <p>Tel:0115 925 0172</p> <p>www.nottinghamshire.gov.uk</p>
<ul style="list-style-type: none"> Every Sensation <p>PMLD and those with complex needs & severe physical & learning disabilities</p>	<ul style="list-style-type: none"> Kingsmill Road West, Sutton In Ashfield NG17 1JS <p>Tel: 01623 557 560</p> <p>www.everysensation.co.uk</p>



<ul style="list-style-type: none"> • Mencap Nottingham. <p>Charity Organisation, for people with a learning disability or difficulty.</p>	<ul style="list-style-type: none"> • Harpenden House, 203 Edwards Lane Sherwood, Nottingham, NG5 3JA <p>Tel: 0115 920 9524</p> <p>www.nottinghammencap.org.uk</p>
<p>Nottinghamshire County Council</p> <p>Gedling Day Service</p> <p>Netherfield Day Service</p> <p>Broxtowe Day Service</p>	<p>Gedling Day Service, Howbeck Road, Arnold, NOTTINGHAM NG5 8AA 0115 9674805</p> <p>Netherfield Day service Lay Street, Netherfield, Nottingham 01159613639</p> <p>Broxtowe day service Sunnyside Road, Beeston, Nottingham Ng9 4FR</p> <ul style="list-style-type: none"> • 01159250172
<ul style="list-style-type: none"> • Portland Freedom <p>Short breaks and day service provision attached to Portland College.</p> <p>Independent Living programme.</p>	<ul style="list-style-type: none"> • Nottingham Road, Mansfield, NG18 4TJ <p>Tel: 01623 499111</p> <p>www.portland.ac.uk</p>
<p>Reach – Flower Pod</p> <ul style="list-style-type: none"> • Reach is the new name for Southwell Care Project aimed at supporting adults with learning disabilities in Nottinghamshire 	<p>Telephone 01636 918271 or 01636 819 066</p> <p>E-mail info@southwellcare.org</p> <p>Website <ul style="list-style-type: none"> • Southwell Care Project </p>
<ul style="list-style-type: none"> • Scope <p>A disability charity working with disabled people and their families.</p>	<ul style="list-style-type: none"> • Concord House, Nottingham Road Basford, Nottingham, NG7 7FF <p>Tel: 0115 942 0060</p> <p>www.scope.org.uk</p>



<ul style="list-style-type: none"> • Space Inclusive. <p>Social Enterprise for those with learning disabilities and learning difficulties.</p>	<ul style="list-style-type: none"> • 20 Pelham Road, Nottingham.NG5 1AP (also Sherwood /Mansfield Woodhouse) <p>Tel: 0115 837 0693</p> <p>www.spaceinclusive.co.uk</p>
<ul style="list-style-type: none"> • Summerwood day services, Clifton. <p>Provides support to people with physical, sensory & learning disabilities.</p>	<ul style="list-style-type: none"> • Summerwood Lane Clifton Nottingham NG11 9DR <p>Tel: 0115 915 7985</p> <p>www.nottingham.gov.uk/summerwood</p>
<ul style="list-style-type: none"> • Thera East Midlands <p>Supports adults with a learning disability to live the life they choose.</p>	<ul style="list-style-type: none"> • The West House, Alpha Court Swingbridge Road, Grantham Lincolnshire, NG31 7XT <p>Tel: 0300 303 1282</p> <p>www.thera.co.uk/thera-east-midlands</p>
<p>Pulp Friction</p> <p>Pulp Friction supports adults with learning disabilities to develop their work, social and independence skills.</p>	<p>pulpfrictionsmoothies.org.uk</p> <p>Telephone: 07794 676398</p>



Residential Colleges

Residential College Provision	Contact Details
<ul style="list-style-type: none"> Homefield, Sileby, Leicestershire <p>A small Independent Specialist College (and charity) for individuals with a range of learning difficulties, especially ASD.</p>	<ul style="list-style-type: none"> 42 St Mary's Road, Sileby, Loughborough, Leicestershire, LE12 7TL <p>Tel: 01509 814827 www.homefieldcollege.ac.uk</p>
<ul style="list-style-type: none"> National Star College, Cheltenham <p>Provides personalised learning, transition and destination services to people with disabilities.</p>	<ul style="list-style-type: none"> Ullenwood, Cheltenham Gloucestershire, GL53 9QU <p>Tel: 01242 527631 www.nationalstar.org</p>
<ul style="list-style-type: none"> Portland College <p>Residential unit attached to day college which provides Educational and vocational training courses for a wide range of disabilities, including ASD.</p>	<ul style="list-style-type: none"> Nottingham Road, Mansfield, NG18 4TJ <p>Tel: 01623 499111 www.portland.ac.uk</p>
<ul style="list-style-type: none"> Weelsby/Linkage College, Grimsby <p>Charity run provision of care, specialist further education and employment services for people with learning disabilities</p>	<ul style="list-style-type: none"> Linkage, Toynton Hall, Toynton All Saints, Spilsby, PE23 5AE <p>Tel:01790 752499 www.linkage.org.uk/college</p>



Residential Settings

Residential setting Provision	Contact Details
<ul style="list-style-type: none">• Home from Home Care, Lincolnshire Care Home For Special Needs, Learning Disabilities, Autism, Epilepsy, Cerebral Palsy, PMLD, Complex Health and Mental Health.	<ul style="list-style-type: none">• The Old Hall Chapel Road, Lincoln LN3 4HD Tel: 01522 595395 www.homefromhomecare.com
<ul style="list-style-type: none">• The Old Orchard, Newark• Village Farm, Newark Both residential care home settings cater for young adults with severe learning difficulties and challenging behaviour.	<ul style="list-style-type: none">• Witham Valley Care Group, Village Farm, Newark Road, Norton Disney, Lincoln, LN6 9JS Tel: 01522 789354 www.withamvalleycaregroup.co.uk



Supported Internships

Supported Internship Provision	Contact Details
<ul style="list-style-type: none"> • Project Search <p>Project SEARCH is a year-long programme of work-based training. It works through a partnership between:</p> <ul style="list-style-type: none"> • A host employer (Nottingham University Hospitals) • A school (Foxwood Academy) • A supported employment service (Nottinghamshire County Council i-Work) 	<p>Foxwood Academy</p> <ul style="list-style-type: none"> • Based Across different sites. <p>Tel: 0115 9177212</p> <p>Email: jhutchinson@foxwood.notts.sch.uk</p>
<ul style="list-style-type: none"> • Landmark Specialist College <p>Offers supported internships.</p> <p>Functional, practical, realistic learning courses from Entry Level 1 to Level 2.</p>	<ul style="list-style-type: none"> • A variety of sites within Nottingham and wider. <p>Tel: 01246 433 788</p> <p>www.landmarks.ac.uk</p>
<ul style="list-style-type: none"> • Nottingham College • Stapleford Site • Basford • Clarendon <p>Offers supported internships.</p>	<ul style="list-style-type: none"> • Main site for LLDD- Stapleford. Many sites throughout Nottingham. <p>Tel: 0115 9100 100</p> <p>https://www.nottinghamcollege.ac.uk/about-us/locations/stapleford</p>
<ul style="list-style-type: none"> • Portland College. <p>Educational and vocational training</p> <ul style="list-style-type: none"> • courses for a wide range of disabilities, including ASD. 	<ul style="list-style-type: none"> • Nottingham Road, Mansfield, NG18 4TJ <p>Tel: 01623 499111</p> <ul style="list-style-type: none"> • www.portland.ac.uk